

RHTemp1000IS

INTRINSICALLY SAFE HUMIDITY & TEMPERATURE DATA LOGGER



Features

- Software Battery Life Indicator
- Intrinsically Safe Certified
- 316 Stainless Steel Enclosure
- Small, Sleek Design
- Fast Response Time
- Engraved Label
- CE Compliant

Benefits

- Faster Downloads
(1 min. full memory)
- Docking Station Communication
- Easily Identify Low Battery Voltage

Applications

- EtO Sterilization
- Environmental Studies
- Hostile Environment Monitoring
- Medical & Pharmaceutical

The new RHTemp1000IS is an Intrinsically Safe humidity and temperature data logger. The RHTemp1000IS is FM Approvals certified as Intrinsically Safe for Class 1, Division 1, groups A, B, C, and D and non-incendive for Class 1, Division 2 groups A, B, C, D and hazardous environments. This certification makes the device ideal for EtO Sterilization, environmental studies, and numerous other hostile environment applications.

One of the enhancements to the RHTemp1000IS is the stainless steel enclosure with engraved serial number and device name. The device interfaces with the IFC400 or the IFC406 (sold separately) docking station and can be placed directly into the dock for full communications. No more removal of end-caps to download data! The small size of the RHTemp1000IS, allows it to be placed in remote or hard to reach locations. The device now features a battery life indicator allowing users to easily identify low voltage and change batteries when required. This feature maximizes the use of your battery life and is a cost saving efficiency. The RHTemp1000IS can hold up 16,350 humidity and temperature measurements. Its real time clock ensures that all the data is time and date stamped.

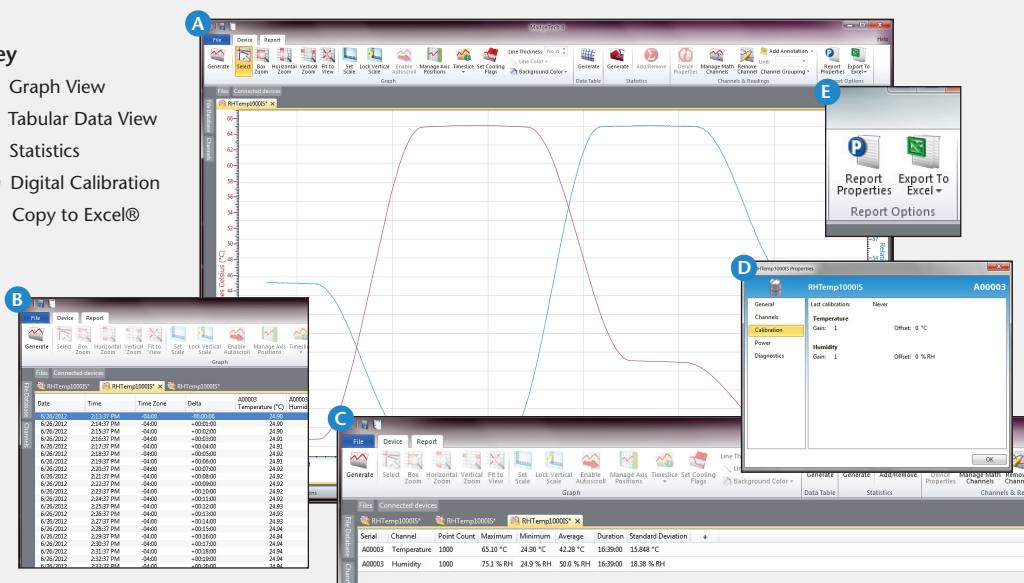


The MadgeTech Software is a powerful, analytic tool, available to download for free from our website www.madgetech.com. Data can be viewed in graphical or tabular formats and summary and statistics views are available for further analysis.

MADGETECH DATA LOGGER SOFTWARE

Key

- A** Graph View
- B** Tabular Data View
- C** Statistics
- D** Digital Calibration
- E** Copy to Excel®



Software Features:

- Multiple graph overlay
- Statistics
- Digital calibration
- Zoom in/ zoom out
- Lethality equations (F0, PU)
- Mean Kinetic Temperature
- Full time zone support
- Data annotation
- Min./Max./Average lines
- Data table view
- Automatic report generation
- Summary view
- Multilingual

RHTEMP1000IS SPECIFICATIONS*

Temperature

Temperature Sensor:	Resistance Temperature Detector (RTD)
Temperature Range:	-40 °C to +80 °C (-40 °F to +176 °F)
Temperature Resolution:	0.01 °C
Temperature Response Time in Air:	t ₆₃ - 8 minutes to 63% of change t ₉₀ - 68 minutes to 90% of change
Calibrated Accuracy:	±0.5 °C (0 °C to 55 °C)

Humidity

Humidity Sensor:	Capacitive Polymer
Humidity Range:	0 %RH to 100 %RH (non-condensing)
Humidity Resolution:	0.1 %RH
Humidity Response Time in Air:	t ₆₃ - 30 seconds to 63% of change t ₉₀ - 2 minutes to 90% of change
Calibrated Accuracy:	±3.0 %RH maximum

General

Start Modes:	Software programmable immediate start or delay start up to 24 months in advance
Real Time Recording:	May be used with PC to monitor and record data in real time
Memory:	16,350 readings per channel
Password Protection:	Yes
Reading Rate:	1 reading every second up to 1 reading every 24 hours

*SPECIFICATIONS ARE SUBJECT TO CHANGE WITHOUT NOTICE. SPECIFIC WARRANTY REMEDY LIMITATIONS APPLY. CALL 1-603-456-2011 OR GO TO WWW.MADGETECH.COM FOR DETAILS.

Calibration:	Digital calibration through software
Calibration Date:	Automatically recorded within device
Memory Wrap:	Yes
Data Format:	Date and time stamped °C, °F, K, °R; %RH, mg/mL, Dew Point
Battery Life:	2 years typical at 25 °C (15 minute reading rate)
Battery Type:	3.6V lithium battery included, user replaceable
Time Accuracy:	±1 minute/month at 25 °C
Required Interface Package:	IFC400 or IFC406
Computer Interface:	USB (interface cable required); 125,000 baud
Operating System Compatibility:	Windows XP SP3/Vista/Windows 7/Windows 8
MadgeTech Software Compatibility:	<ul style="list-style-type: none">Standard Software version 4.1.0.2 or laterSecure Software version 4.1.3.0 or later
Operating Environment:	-40 °C to +80 °C (-40 °F to +176 °F), 0 %RH to 100 %RH (non-condensing)
Dimensions:	1.7 in x 0.97 in x 0.97 in (42 mm x 24.6 mm x 24.6 mm)
Weight:	2.3 oz (65 g)
Material:	316 Stainless Steel/PEEK
Approvals:	CE; Intrinsically Safe for Class I, Div 1, groups ABCD; Non-incendive for Class I, Division 2, groups ABCD Hazardous (Classified) Locations

BATTERY WARNING: FIRE, EXPLOSION AND SEVERE BURN HAZARD. DO NOT RECHARGE, DISASSEMBLE, HEAT ABOVE 100 °C (212 °F), INCINERATE, CRUSH, OR EXPOSE CONTENTS TO WATER.

ORDERING INFORMATION

MODEL	DESCRIPTION
RHTEMP1000IS	Intrinsically Safe Humidity and Temperature Data logger
IFC400	Docking station with USB cable, software, and manual
IFC406	6 Port, Multiplexer docking station with USB cable, software and manual
Calibration Certificate	Calibration Certificate available for data logger
TL-2150/S	Replacement battery for RHTemp1000IS

ASK ABOUT
OUR OTHER
DATA
LOGGERS

Temperature
Humidity
Pressure
pH
Level
Shock
LCD Display
Pulse/Event/State
Current
Voltage
Wireless
Intrinsically Safe
Spectral Vibration
Motion

For Quantity Discounts call 603-456-2011 or email sales@madgetech.com